

Developers:
UNITED INFRA
Call: +91 00000 00000
email:

Site: SAI GRACE, Off Nilamber Circle,
30 mtrs. Vasna-Dandia Bazaar Road, Vadodara.

Architects:
 **EIA** architects
& associates

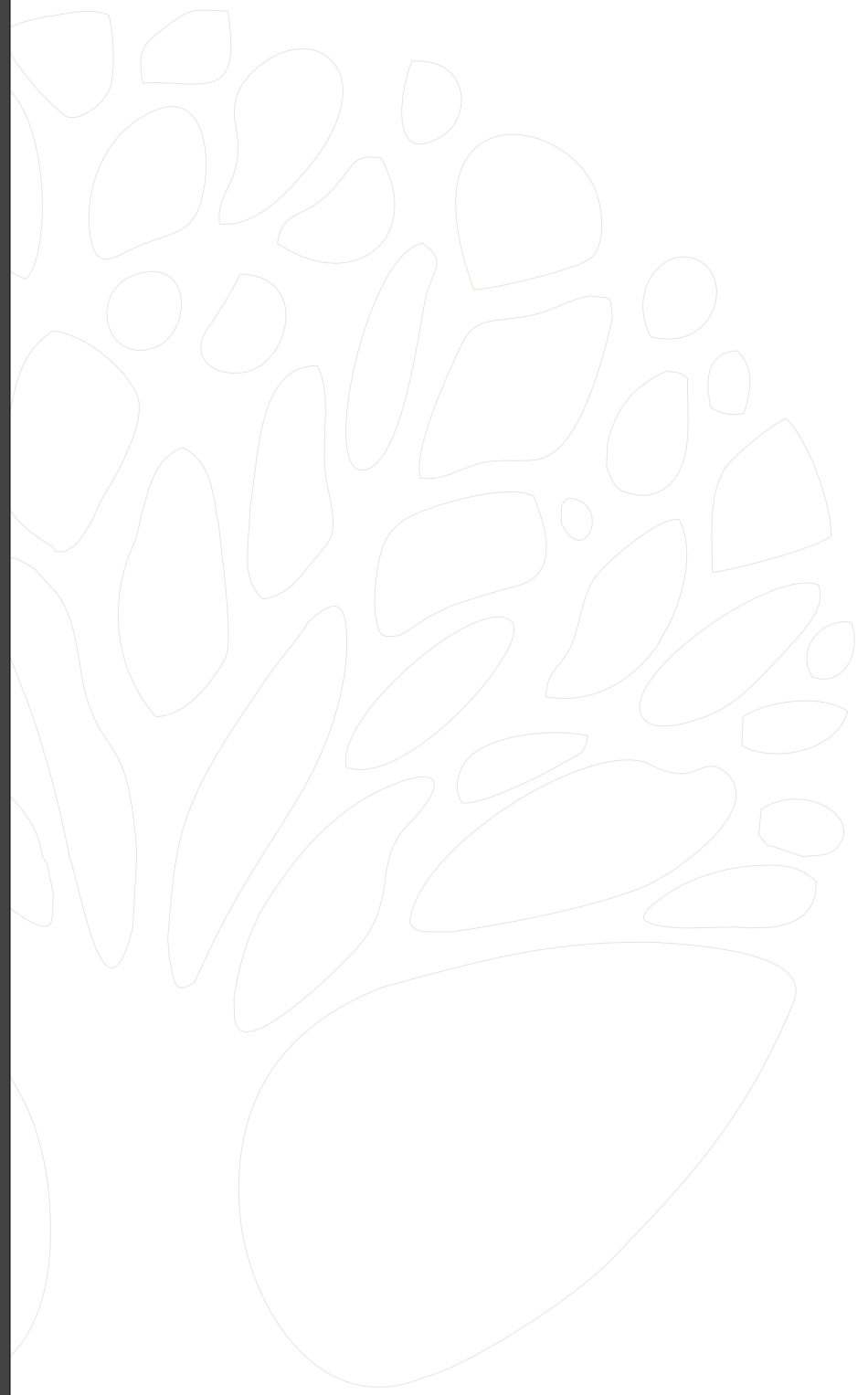
Structural Consultant:

design: smoke&arrow / 17 @ 98240 92010



3 BHK FLATS & PENTHOUSE





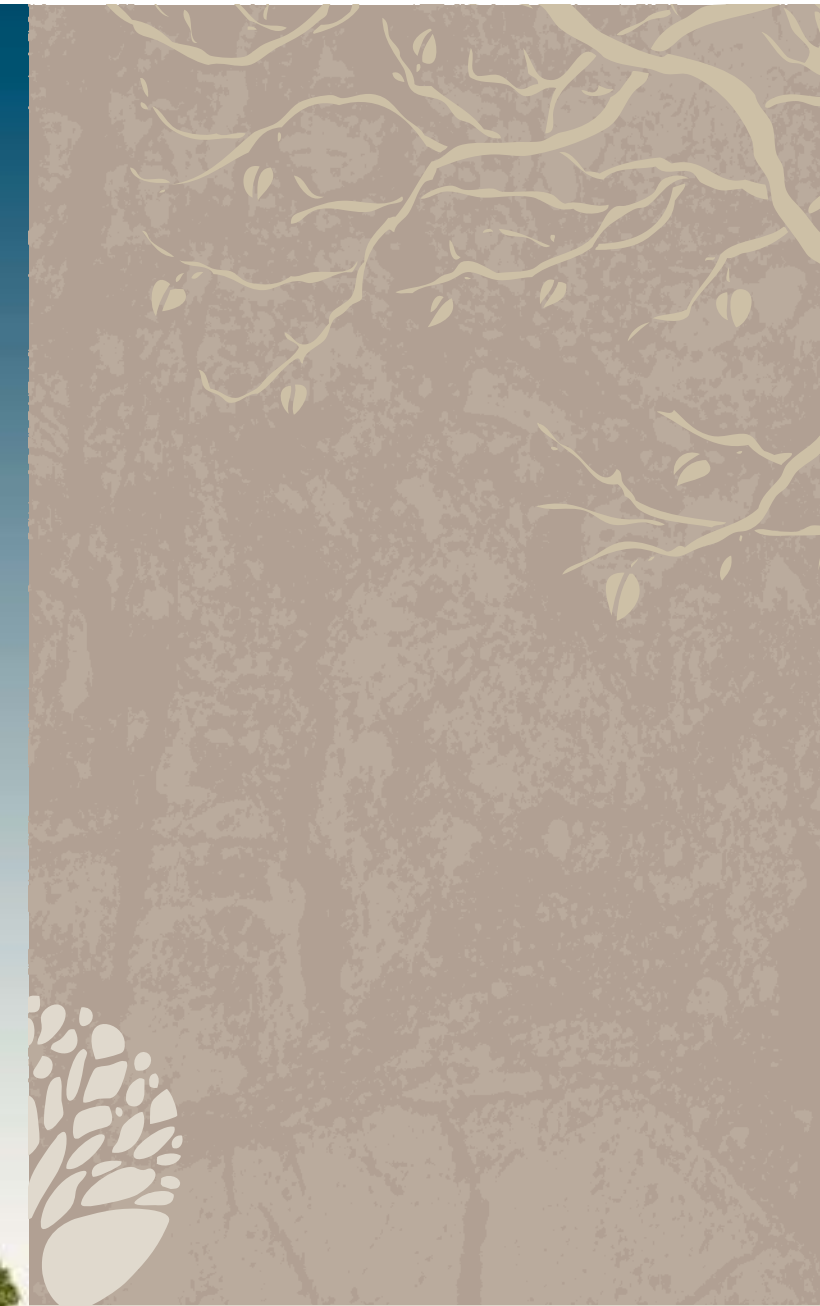
An ode to the delightful and much loved city of Baroda.

A city that is big enough to offer the best urban facilities and small enough to easy commute within. A city with renowned educational institutions, a city is often called the cultural capital of Gujarat or the 'Sanskar Nagari'. A city with a heart and soul, a city that grows on to you even if you don't belong to it in the first place. A city with a rich, educated and vibrant population, and one that offers the best quality of living.

Sai Grace is a reflection of Vadodara's quest to transform into a modern city, but firmly connected to its roots. A campus that is aesthetically designed, offering the best finish, with thoughtful planning to ensure a life full of bliss for its residents. Welcome to the good life!



An elevating experience in a living that spawns unparalleled lifestyle advantages; the luxurious finish that embraces the entire entity to exude a refined sense of design finesse.



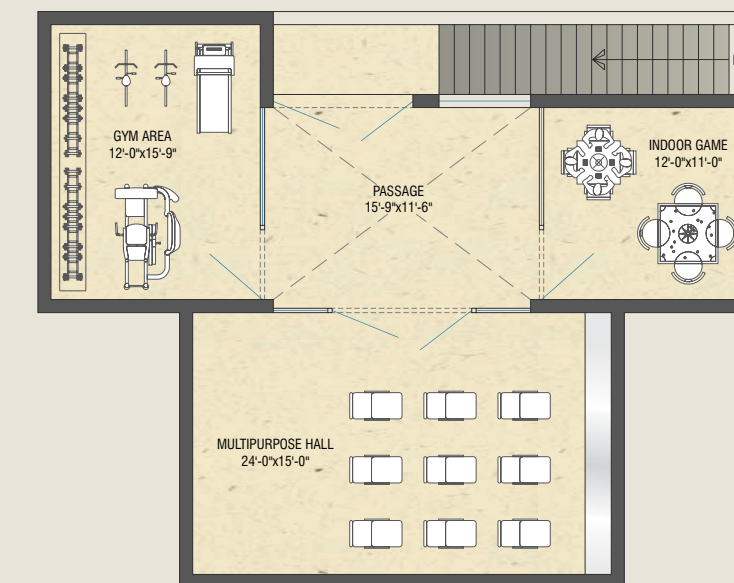
Located in the prime surroundings of Nilamber Circle, amidst luxury commercial & residential development lies Sai Grace. The project of limited edition 3-BHK spacious Apartments & Terrace Apartments with its unbeatable location makes a winning combination. Truly a rare combination, justifying its name...indeed the grace of god!

An ode to good living, the elegant exterior elevation, coupled with an high quality interior finish and spacious planning creates a delightful living space.

Move over to your new abode, an investment that shall give you and your family a lifetime of happiness and opulent living!



 CLUB HOUSE (Basement)



AMENITIES

- Attractive Entrance Gate
- Club House
- 24 Hours Power Back-up in Common Areas
- Standard Quality Lift with Power Backup
- Tastefully Done Decorative Entrance Lobby
- Safe and Secure Intercom Security System

SPECIFICATIONS

- Vitrified Tiles Flooring
- Decorative Main Door & Internal Laminated Doors
- Systematic Wall Concealed CPVC Plumbing, Good Quality Fitting & Tiles Dado up to Slab Level
- Provision for Electric Geyser in Bathroom
- Abundant Electric Point with Modular Switches
- R.O. Water System in Kitchen
- Color Anodized Aluminium Windows with Safety Grills
- Granite Platform with C.P Fitting & S.S. Sink in Kitchen
- Internal Wall finished with Putty & Primer
- External Walls finished with Weather Proof Acrylic Paint
- Borewell & Water Softener Plant
- Provision for A/C Ducting in Living Room & Bedrooms

LEISURE AMENITIES

From pleasing aesthetics to practical recreational amenities, life at Sai Grace shall be full of excitement and joy with the host of facilities to enjoy with your family and make new relationships with like minded neighbours.

- ✂ Landscaped Garden
- ✂ Indoor Games
- ✂ Multi-purpose Hall
- ✂ Outdoor Seating
- ✂ Children's Play Area



TYPICAL LAYOUT PLAN | 1ST TO 7TH FLOOR



TYPICAL LAYOUT PLAN | 8TH FLOOR





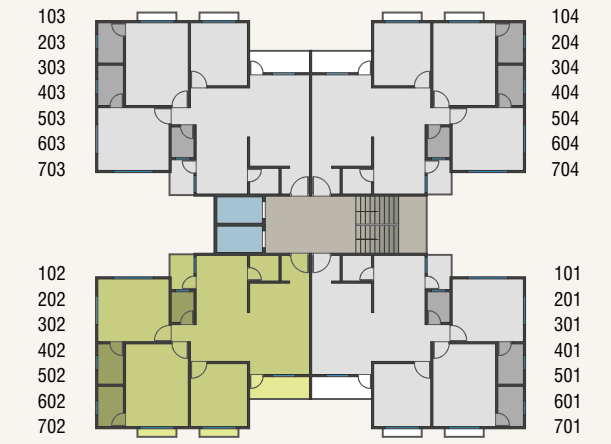
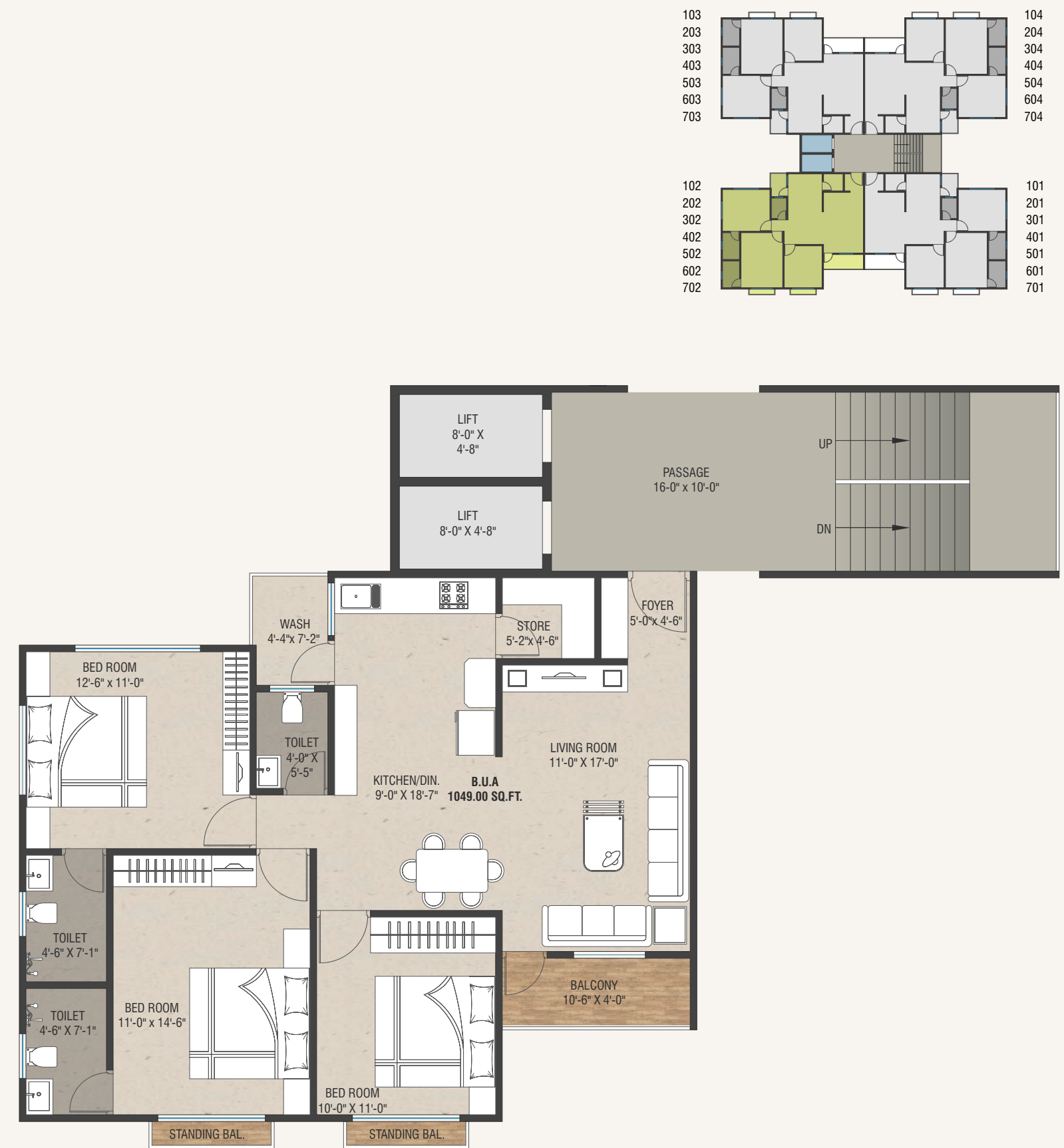
TOWER A | TYPICAL FLOOR PLAN | 1ST TO 7TH FLOOR



B.U.A: 1114.00 SQ.FT.



TOWER B | TYPICAL FLOOR PLAN | 1ST TO 7TH FLOOR





TYPE A & B TYPICAL FLOOR PLAN (1st to 4th floor)

B. AREA = 1263.34 SQ.FT. | C. AREA = 1155.65 SQ.FT



TYPE C TYPICAL FLOOR PLAN (1st to 4th floor)

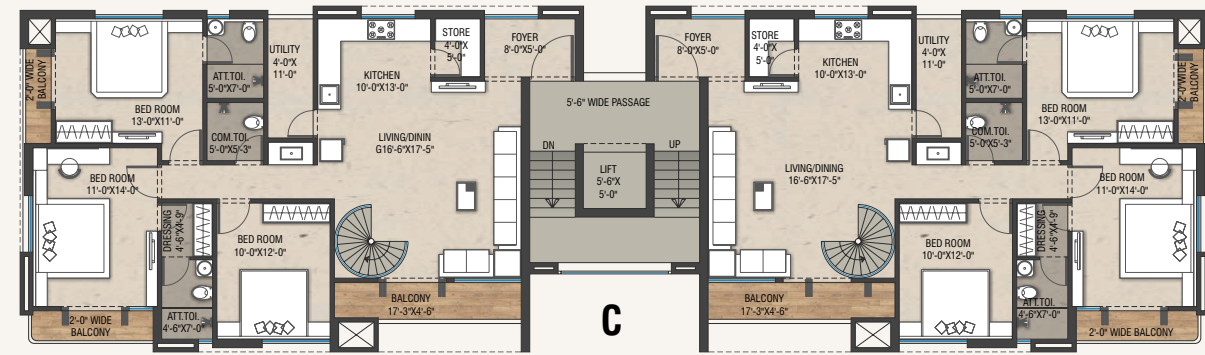
B. AREA = 1286.12 SQ.FT. | C. AREA = 1172.07 SQ.FT





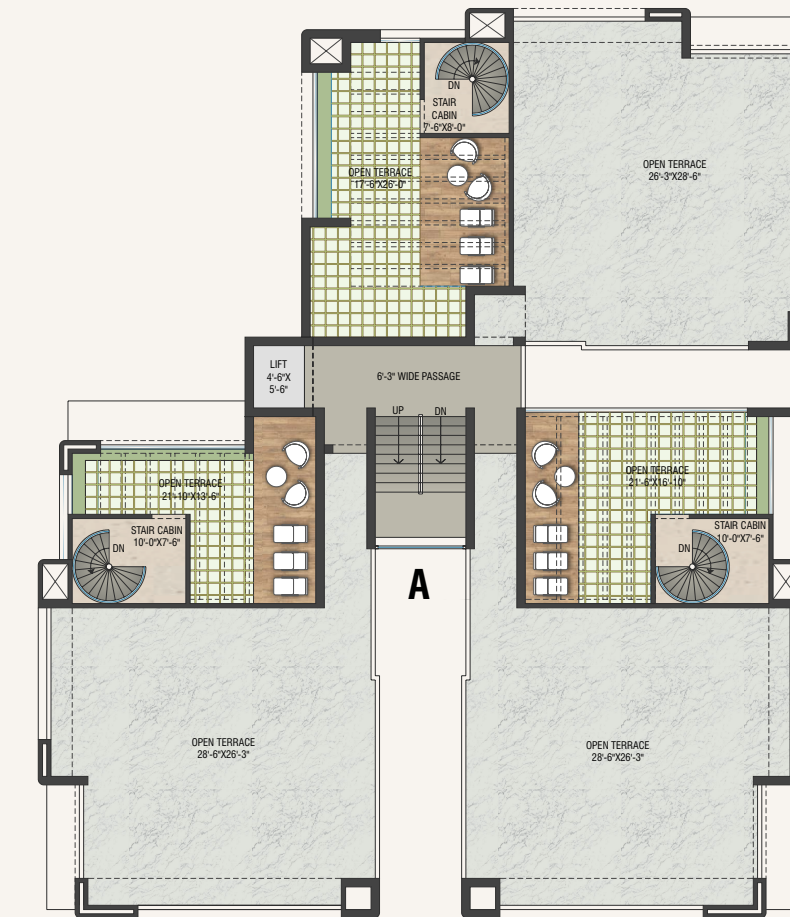
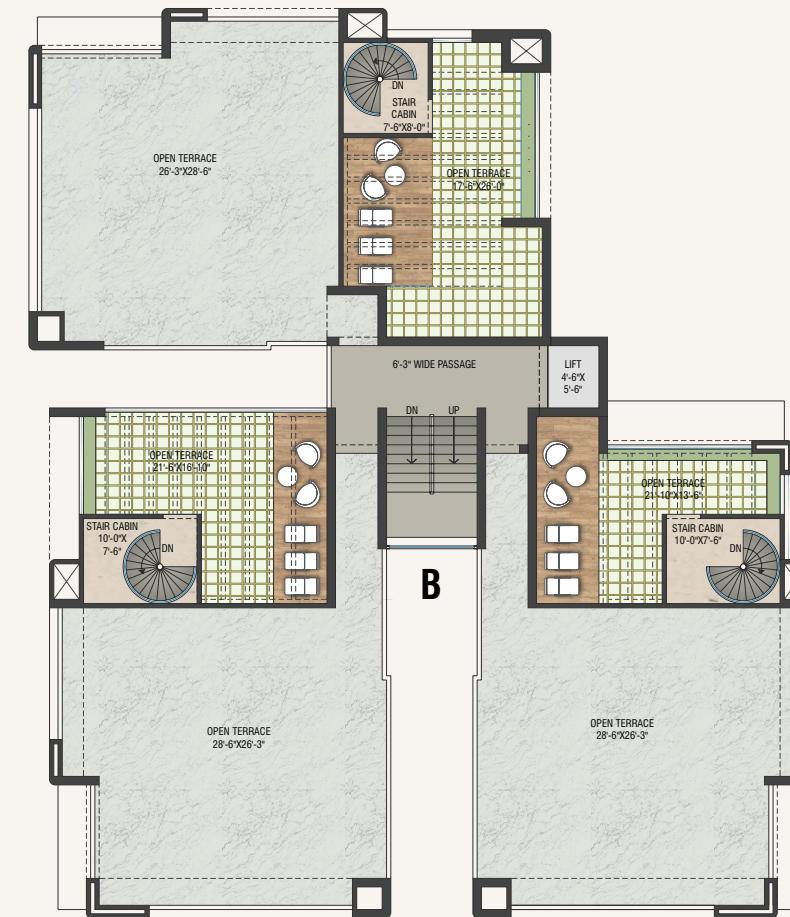
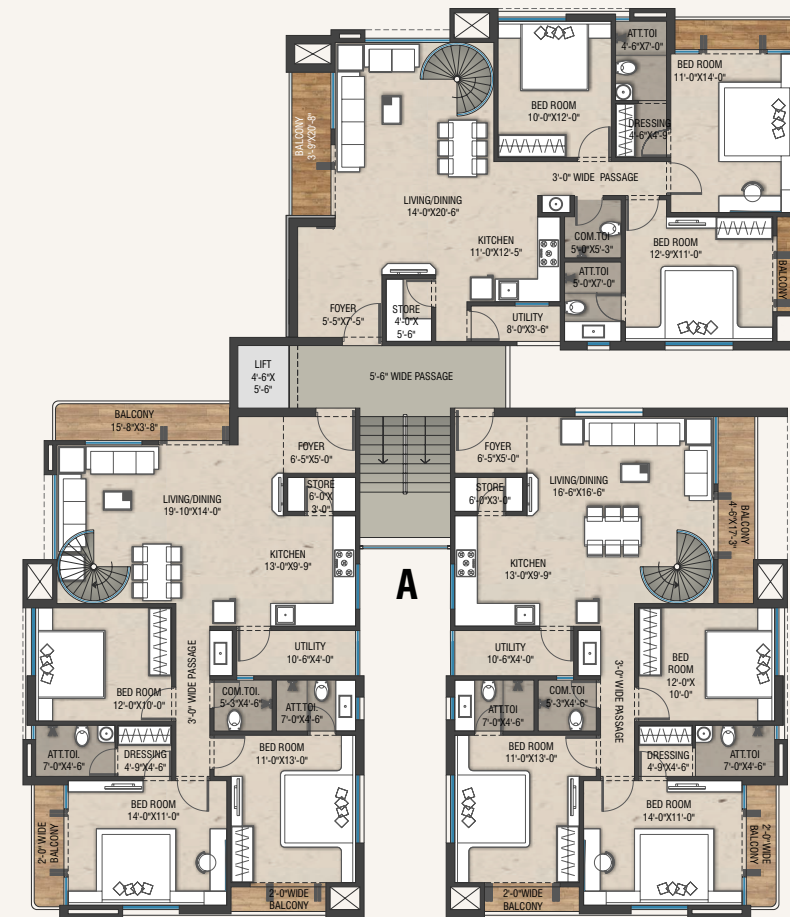
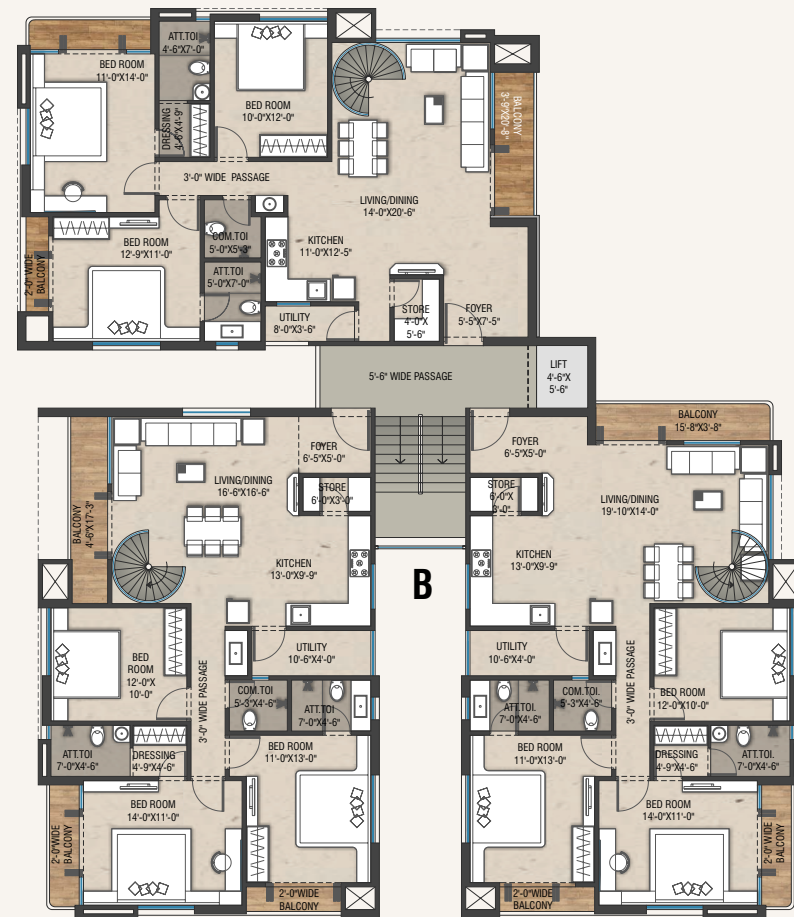
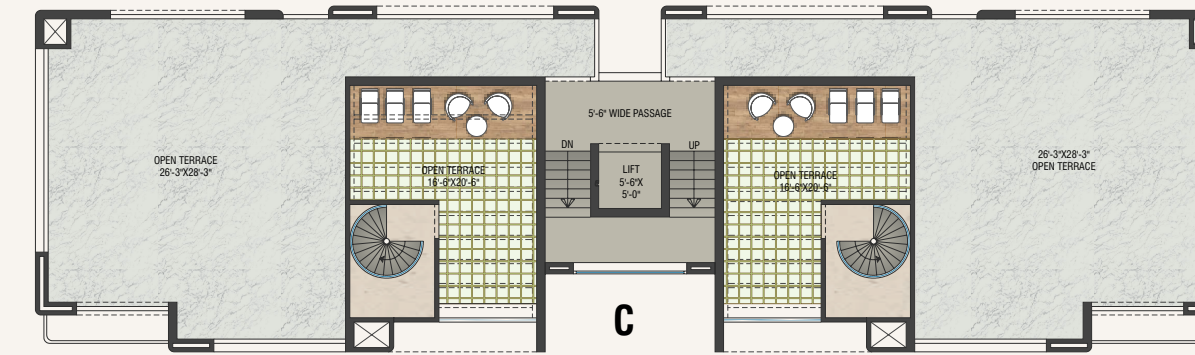
PENTHOUSE LOWER LEVEL (5th floor)

B. AREA = 1263.34 SQ.FT. | C. AREA = 1155.65 SQ.FT.



PENTHOUSE UPPER LEVEL (6th floor)

B. AREA = 1263.34 SQ.FT. | C. AREA = 1155.65 SQ.FT.





Disclaimer: • All plans are subject to amendments and approval by the relevant authorities. • All photography and computer imagery are artist's impression and are provided for illustrative and indicative purposes only. • The dimensions and areas shown are from block to block, without considering any plaster & finish. • The size, shape, and position of doors/windows, columns, design of railings and various other elements are subject to change. • The finishes - flooring, paint colour, door finish/colour, and any other finishes are only indicative and are subject to change. • While every reasonable care has been taken in providing this information, the developers cannot be held responsible for any inaccuracy. • Subject to Vadodara Jurisdiction.